

1. Maggie in the Woods

Musical notation for 'Maggie in the Woods' in G major (one sharp) and 2/4 time. The piece consists of four staves of music. The first staff begins with a treble clef, a key signature of one sharp (F#), and a 2/4 time signature. The melody is written in a single line. The second staff continues the melody. The third staff begins with a repeat sign (double bar line with two dots) and continues the melody. The fourth staff concludes the piece with a double bar line and repeat dots.

2. John Ryan's Polka

Musical notation for 'John Ryan's Polka' in G major (one sharp) and 2/4 time. The piece consists of four staves of music. The first staff begins with a treble clef, a key signature of one sharp (F#), and a 2/4 time signature. The melody is written in a single line. The second staff continues the melody. The third staff begins with a repeat sign (double bar line with two dots) and continues the melody. The fourth staff concludes the piece with a double bar line and repeat dots.

3. Captain Byng

Musical notation for 'Captain Byng' in G major and 2/4 time. The piece consists of four staves of music. The first staff is the main melody. The second staff contains a first ending (1.) and a second ending (2.). The third staff is a repeat of the first staff. The fourth staff contains another first ending (1.) and second ending (2.).

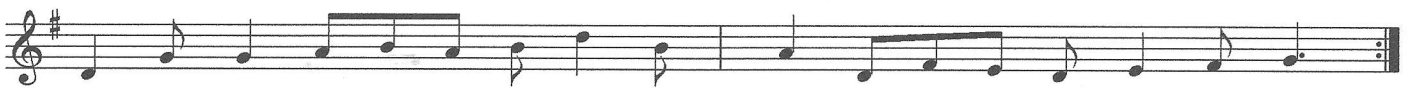
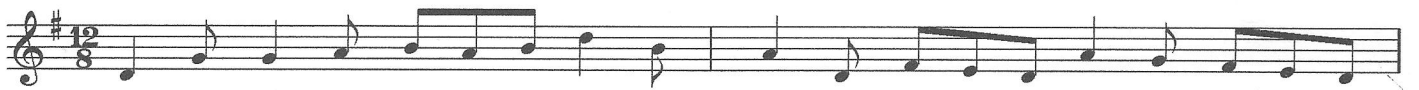
4. Bill Sullivan's

Musical notation for 'Bill Sullivan's' in G major and 2/4 time. The piece consists of four staves of music. The first staff is the main melody. The second staff contains a first ending (1.) and a second ending (2.). The third staff is a repeat of the first staff. The fourth staff contains another first ending (1.) and second ending (2.).

5. Scattery Island



6. Brosna Slide



7. Mountains of Pomeroy

Musical notation for the piece "Mountains of Pomeroy". It consists of four staves of music in 4/4 time, with a key signature of one sharp (F#). The melody is written in treble clef. The first staff begins with a repeat sign. The piece concludes with a double bar line and repeat dots.

8. Lucy Farr's Barndance

Musical notation for the piece "Lucy Farr's Barndance". It consists of four staves of music in 4/4 time, with a key signature of one sharp (F#). The melody is written in treble clef. The first staff begins with a repeat sign. The piece concludes with a double bar line and repeat dots.

9. My Darling Asleep

Musical notation for "My Darling Asleep" in G major, 6/8 time. The piece consists of four staves of music. The first staff begins with a treble clef, a key signature of one sharp (F#), and a 6/8 time signature. The melody is written in a single line. The second staff continues the melody and ends with a double bar line and repeat dots. The third staff begins with a repeat sign and continues the melody. The fourth staff continues the melody and ends with a double bar line and repeat dots.

10. Jimmy Ward's Jig

Musical notation for "Jimmy Ward's Jig" in G major, 6/8 time. The piece consists of four staves of music. The first staff begins with a treble clef, a key signature of one sharp (F#), and a 6/8 time signature. The melody is written in a single line. The second staff continues the melody and includes first and second endings, marked with "1." and "2." above the staff. The third staff continues the melody and ends with a double bar line and repeat dots. The fourth staff continues the melody and includes first and second endings, marked with "1." and "2." above the staff.

11. Little Diamond Polka

Musical score for "Little Diamond Polka" in G major (one sharp) and 2/4 time. The score consists of four staves of music. The first staff contains the first measure of the melody. The second staff contains the second measure, followed by a first ending bracket labeled "1." and a second ending bracket labeled "2.". The third staff contains the third measure, starting with a repeat sign. The fourth staff contains the fourth measure, also starting with a repeat sign, followed by a first ending bracket labeled "1." and a second ending bracket labeled "2.".

12. Ballyhoura Mountains

Musical score for "Ballyhoura Mountains" in G major (one sharp) and 2/4 time. The score consists of four staves of music. The first staff contains the first measure of the melody. The second staff contains the second measure. The third staff contains the third measure, starting with a repeat sign. The fourth staff contains the fourth measure, also starting with a repeat sign.